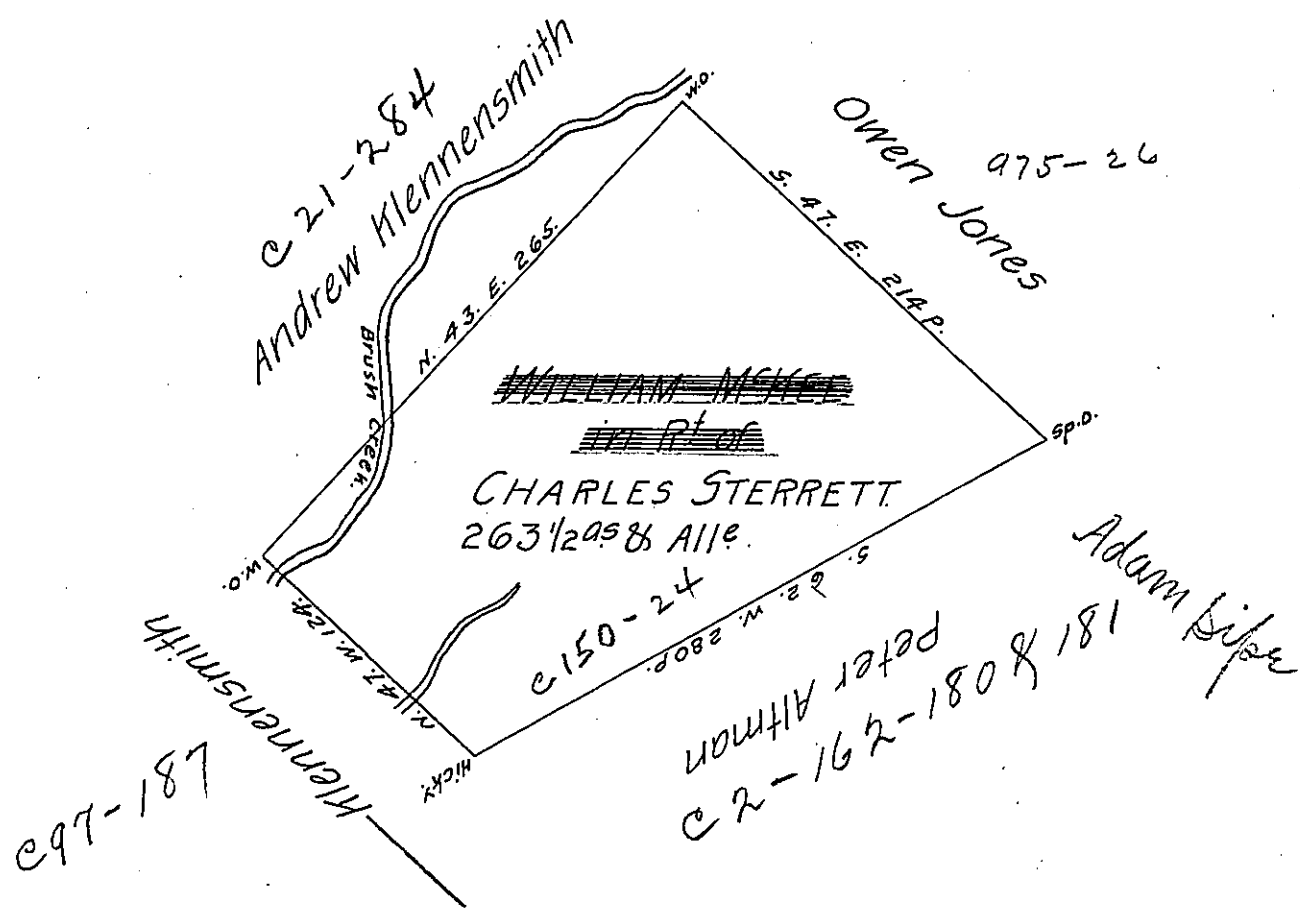


265  
49  
314



of an Application  
 In Pursuance, bearing date April 3<sup>rd</sup> 1769, N<sup>o</sup> 869. Surveyed on the  
 7<sup>th</sup> day of May 1788 unto William McKee in Right of Charles Sterrett, the above  
 Discribed Tract of Land Situate on Brush Creek, in Hempfield Township, in  
 the Co<sup>y</sup>nty of Westmoreland. Containing Two Hundred and Sixty three Acr-  
 es 1/2 & Allowance of Six Per Cent for roads &c.

Benj. Lodge, D.S.

To John Lukens, Esq }  
 Surveyor General }

IN TESTIMONY that the above is a copy of the original remaining on file in  
 the Department of Internal Affairs of Pennsylvania, made  
 comformably to an Act of Assembly approved the 16th day of  
 February 1833, I have hereunto set my hand and caused  
 the Seal of said Department to be affixed at Harrisburg,  
 this fourteenth day of January 1907.

*Isaac B. Brown*  
 Secretary of Internal Affairs.